

20 YEARS GREENWICH MILLENNIUM VILLAGE

CELEBRATING 20 YEARS OF VILLAGE LIFE IN THE CITY

VILLAGE LIFE

KEEPING YOU UP-TO-DATE WITH VILLAGE LIFE | WINTER 2020 - ISSUE 6

It's the Winter news about our Village

Welcome to the sixth edition of Village Life Magazine. And there's a lot to report on so dig in!

Life continues to be challenging for obvious reasons but there's still plenty to smile about and our very special community goes from strength to strength.

In this issue we'll review the recent yoga event, the lovely Summer wreath making day and our postcard/photography competition.

67 Central Park is opening up and we give you a brief look at how Greenwich Millennium Village actually started life. Plus, hear from people who live here, including a soon-to-be-famous author, on exactly why they chose to live here.

As usual; enjoy the read.

CREATING A SUMMER WELCOME

Our summer wreath making event was a success.

P2-3



POSTCARD SUMMER FUN

June's 'Holiday at Home' postcard competition.

P6-7



67 PARK CENTRAL

The first homes in this exciting new phase are now available.

P12-15





Summer wreath making event



Katy Coe
Florist

OUR SUMMER WREATH MAKING EVENT WAS A GREAT SUCCESS WITH PARTICIPANTS ENJOYING WONDERFUL WEATHER AND AN ABUNDANCE OF BLOOMS.

Professional florist Katy Coe helped residents create their very own wreaths and the results were amazing. Sunflowers, carnations and many other summer flowers were all used, together with hand painted wooden hearts decorated with the NHS rainbow.



Thank you!

THE STUNNING WREATHS DECORATED MANY FRONT DOORS SO EVERYONE COULD ENJOY THIS GREAT FLOWERY. THANK YOU.

“THIS LOVELY EVENT PROVIDED RESIDENTS WITH A WONDERFUL OPPORTUNITY TO ENJOY EXCELLENT WEATHER AND SPEND TIME TOGETHER. EVERYONE HAD A FANTASTIC TIME. IT’S THIS TRUE SENSE OF COMMUNITY THAT MAKES GREENWICH MILLENNIUM VILLAGE REALLY STAND OUT.”

*Chris Genner,
Director of Greenwich Millennium Village*



We Relaxed AND UNWOUND



KATHERINE
COX
YOGA INSTRUCTOR

YOGA
IN THE
PARK!



THE SUNNY
WEATHER ADDED
TO THE GOOD
FEELING ENJOYED
BY EVERYONE
THERE

The Greenwich Millennium Village yoga event was thoroughly enjoyed by residents; beginners and experts alike. The classes, led by yoga guru Katherine Cox, provided something for everyone regardless of previous yoga ability.



"Despite the challenges the fitness industry has had to overcome as a result of the pandemic, we are ecstatic with the outcome of our recent GMV Yoga event. We want to say a huge thank you to our Yoga instructor Katherine, who ensured residents had a really enjoyable time whilst also keeping safe, following the government guidelines and celebrating the community spirit of Greenwich."

CHRIS BLADON
DIRECTOR OF GREENWICH
MILLENNIUM VILLAGE



POSTCARDS SHOW *Summer fun*

June's 'Holiday at Home' postcard competition was a great success. Intended as a fun activity during lockdown, residents were given the creative challenge of entering a drawing or photo to show how they were enjoying their summer.

The fabulous response from residents all of ages included paintings of the River Thames and the Emirates cable car together with collages showing activities around Greenwich Millennium Village. There were also some excellent photographs of children gardening on their balconies.

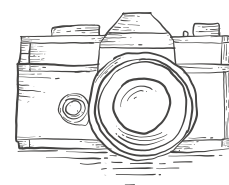
WINNER!

LAILA MOHAMMED WAS OUR WINNER OF THE DRAWING COMPETITION WITH THIS GREAT DESIGN SHOWING HER FAMILY HAVING FUN IN SOUTHERN PARK.

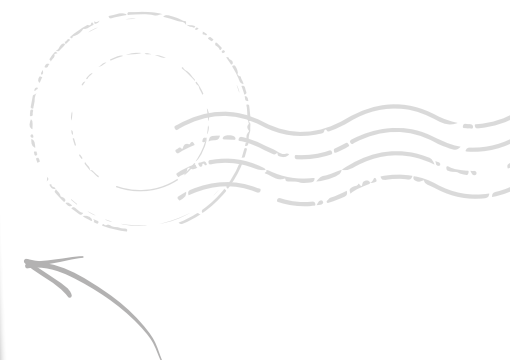


WINNER!

AJANTHA SELVA WAS THE WINNER OF THE PHOTOGRAPHY COMPETITION WITH THIS FABULOUS SHOT ACROSS THE ECOLOGY PARK TO THE RIVER THAMES.



THE WINNING DESIGNS WERE TRANSFORMED INTO ACTUAL POSTCARDS FOR EACH OF THE WINNERS TO SEND TO THEIR FRIENDS AND FAMILY. THEY WERE ALSO AWARDED A £50 GIFT VOUCHER AND A CERTIFICATE.



*Just some
of the great
entries
received*

SCARY FRIGHT-NIGHT

Village Fun

SPOOKTACULAR PUMPKIN CREATIONS

October 31st. It's Halloween of course. How better to celebrate this special, spooky day than to create your own pumpkin and take part in a fun-filled pumpkin carving competition?

Residents were invited to join in this supernatural celebration by reserving one of the many autumnal coloured pumpkins provided by the Village. Then it was just a question of enjoying some creepy carving and joining our competition!

To provide ghostly and ghoulish inspiration, there was a spooktacular pumpkin trail for all to enjoy! Professionally carved pumpkins arranged in a fun trail around the Village Square featured ghosts, witches, broomsticks, cats, bats and a feast of scary faces.



"The Halloween event at Greenwich Millennium Village provided residents with an opportunity to enjoy this annual celebration, whilst adhering to all Government guidelines. The pumpkin trail provided inspiration for the pumpkin carving competition and we received some amazing photos of residents and their carved creations."

CHRIS GENNER
DIRECTOR OF GREENWICH
MILLENNIUM VILLAGE



WINNER!



FIRST PRIZE WENT TO SOPHIE COTTAREL FOR HER AMAZING PUMPKIN CARVING OF A HAUNTED HOUSE. SOPHIE RECEIVED AN AMAZON VOUCHER IN RECOGNITION OF HER WEIRD AND WONDERFUL WORK.



A FANTASTIC AND EXCLUSIVE *Collection*

Greenwich Millennium Village brings you The Parkside Collection; four exceptional new development phases, starting with 67 Park Central, each offering an exclusive selection of beautiful new city homes with premier specifications and the most stunning views.

The Parkside Collection occupies a premium position along the perimeter of Greenwich Millennium Village's Southern Park. Residences in this prestigious new collection therefore provide sensational parkland outlooks and wonderful views towards the River Thames and the City.

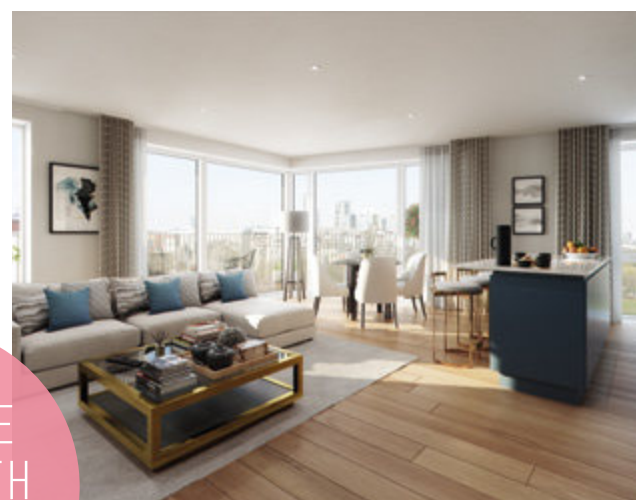
In one of the world's most dynamic and populous capital cities, you can wake up to peace, fresh air and open space every day.

Quality has always been a priority at Greenwich Millennium Village. New homes in The Parkside Collection take the quality concept to another level where a high specification is the norm. The very latest in integrated branded appliances and contemporary style kitchens, together with high-end fixtures, fittings and finishes are all standard in The Parkside Collection residences.

And this high specification approach doesn't stop in your home. The shared facilities within all the four phases of The Parkside Collection will also be of exceptional quality.

What's more, with flexible living space and high speed internet, these homes are well designed and perfectly suited to home working.

THE FIRST PHASE OF THE PARKSIDE COLLECTION IS 67 PARK CENTRAL WHERE A RANGE OF LUXURY ONE TO THREE BEDROOM APARTMENTS ARE NOW AVAILABLE. (SEE PAGES 12 TO 15)



PARKSIDE
HOME WITH
CITY VIEWS



This is a computer generated image. Materials, design and landscaping may differ from those illustrated.

67

PARK CENTRAL

IS NOW READY FOR YOU!

The first homes in this exciting new phase are now available to reserve. 67 Park Central, occupying a prime position within the village, comprises 115 private luxury one to three-bedroom apartments with many new and exclusive on-site facilities such as co-working space and a games room with bar.

Serviced by the development's first ever private team of dedicated day porters, 67 Park Central offers luxurious hotel-style living previously unseen throughout the village.

Built in three blocks varying from five to 11 storeys high, each fabulous new home includes private outdoor space and features full length windows to capitalize on the inspiring panoramic views over the park, river, city or gardens.

Premier specifications include underfloor heating, spacious open plan living and dining areas, sleek kitchens complete with stone worksurfaces and integrated appliances plus built-in wardrobes.

Buyers can choose from traditional style one- and two-bedroom apartment configurations through to three-bedroom duplexes or maisonettes as well as 'courtyard' apartments with their own terrace.

The central podium gardens, communal square and children's play area create great spaces for neighbours to enjoy together. From the games room to co-working spaces, this new phase of homes will bring the community together in ways that hasn't previously been seen at Greenwich Millennium Village.



Many homes will benefit from views of the adjacent park and beyond.



Reception/concierge area with dedicated day porters.





DISCOVER 67 METRES OF *Prime Parkland* FRONTAGE



Karen



Rita

Call us on
0208 023 7882

AND SPEAK TO RITA
OR KAREN TO BOOK
AN APPOINTMENT AND
SEE THE PLANS FOR
YOURSELF

NEW PHASE OF APARTMENTS NOW SELLING



1 BEDROOM APARTMENTS

- Exceptional internal specification as standard
- Open-plan kitchen/living/dining area
- Private outdoor space

GUIDE PRICES FROM £450,000



2 BEDROOM APARTMENTS

- Fantastic apartments with a range of layouts
- Some apartments benefit from views of adjacent park or podium garden
- Balcony or terrace to each home

PRICES FROM £577,495



3 BEDROOM APARTMENTS

- Apartments, maisonettes and duplexes available
- Impressive principal bedroom with en suite and fitted wardrobe
- Balcony or terrace to each home

PRICES FROM £614,995

WHAT TO EXPECT FROM YOUR NEW PARKSIDE COLLECTION HOME



GAMES ROOM
WITH BAR



DEDICATED
DAY PORTERS



CO-WORKING
SPACE



CITY, PARK AND
RIVER VIEWS



INCREDIBLY HIGH
SPECIFICATION



LANDSCAPED
PODIUM GARDEN



Taylor
Wimpey
Central London

SUPPORTED BY
MAYOR OF LONDON



FIRST OF THE FEW

SETTING THE STANDARD FOR 21ST CENTURY LIVING

HAVE YOU EVER WONDERED WHERE IT ALL STARTED FOR GREENWICH MILLENNIUM VILLAGE?



Over 20 years ago the Millennium Communities Programme was formulated by the national regeneration agency English Partnerships (now Homes England). Its objective was to create seven new “villages” across the UK, intended to set the standard for 21st century living and serve as a model for the creation of new communities.

This was to be achieved by promoting innovative building technologies, high urban design standards and sustainable development principles. Housing needed to be high density yet diverse, attractive and comfortable to live in. Provision for open spaces and communal areas was also paramount.

A competition for the first of these villages, on London’s Greenwich peninsula, was launched in 1997 and was won by Countryside Properties in conjunction with Taylor Wimpey and architect Ralph Erskine.

Units were diverse; both in size of living spaces and in use. Apartment blocks were devised so they provided shelter from winds while hiding an appealing mix of streets, squares, green spaces and waterways. Buildings were arranged to absorb light and heat from the sun without casting shadows over other blocks. Innovative construction techniques made use of green building materials, high-grade insulation and efficient appliances to cut energy use.

The design proved as much a hit with the public as with competition judges. People loved the quality of life, the community spirit and the idea of a village within the city. Erskine’s original design concept continues, now thanks to architects Jestico & Whiles.

jestico + whiles

20 YEARS ON AND THE GREENWICH MILLENNIUM VILLAGE STILL SETS THE STANDARD FOR 21ST CENTURY LIVING; WHICH IS HOW IT ALL STARTED.

Image above Eoin Keating and Heirz Richardson. Directors at Jestico & Whiles



We catch up with Jo Hutchings on

CREATING INQUISITIVE *kids*

MILLENNIUM MINIS:
A DAY NURSERY FOR
KIDS FROM THREE
MONTHS TO FOUR
YEARS, HAS NO
DOUBTS ABOUT
THEIR OBJECTIVES.

"Outstanding childcare and being a huge part of the community is at the center of all we do" says founder of Millennium Minis, Jo Hutchings. "Add to this an environment that is stimulating and fun, a skilled team of warm and caring professionals and the aim that each child leaves us with a love for learning and a confident and inquisitive mind."

Opened by Jo and Ben Hutchings in 2012, with the vision to be a true part of the community, Minis has grown along with the needs of the Greenwich Millennium Village.

“WE OFFER QUALITY
CHILDCARE FOR CHILDREN
AND FAMILIES FROM THE
SURROUNDING AREAS,
BUILDING STRONG PARENTAL
PARTNERSHIPS TO ENABLE
US TO WORK TOGETHER”

JO HUTCHINGS
FOUNDER OF
MILLENNIUM MINIS

millennium minis

"THE DECISION FOR PARENTS TO RETURN TO WORK HAS ALWAYS BEEN DIFFICULT. WE TRY TO GIVE A HOME FROM HOME EXPERIENCE WITH A TEAM WHOSE PASSION SHINES THROUGH. WE OFFER EMOTIONAL WARMTH TO OUR CHILDREN AND A VARIETY OF LEARNING EXPERIENCES BASED ON THEIR CURRENT INTERESTS."

To parents we offer an open-door policy where they can communicate nursery successes, areas for development or just feel happy to ask for advice in a safe and non-judgemental environment.

Key to our success is our team of warm, caring and talented professionals, whether it's in our special Baby Hub unit or our 2Plus site. The team's honest approach means that families feel supported. I have seen new mums and dads come to the nursery and struggle with separation anxiety. We are always there to offer support or a cuddle and shoulder to cry on. They trust that we always put the children at the centre of all we do, and this will never change.



"We are so lucky to have green spaces and the Ecology Park on our doorstep. We rely on these spaces and I can honestly say they are kept impeccable for use by the whole community. To have so much opportunity for outside learning is such a gift for us at Millennium Minis"





HOW LIVING AT GREENWICH MILLENNIUM VILLAGE inspired me TO WRITE MY BOOK

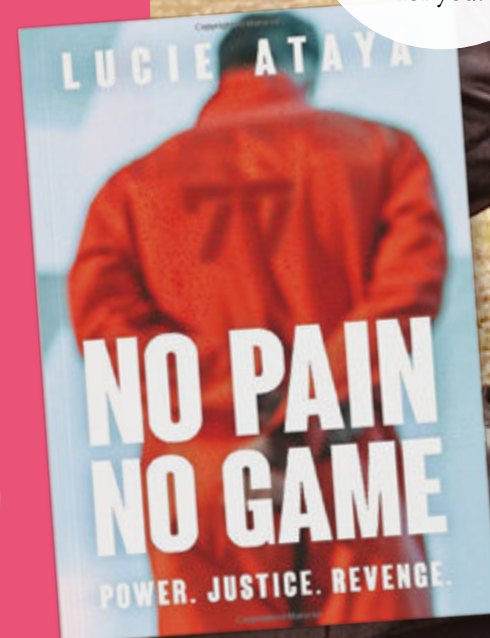
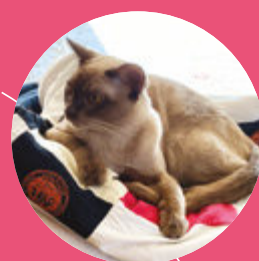
A village feel; a sense of community. Escapism; away from city hustle and bustle. Child friendly and green spaces. Wonderful views; creative and peaceful environment. Fantastic homes. Pet friendly.

WRITER LUCIE ATAYA WANTED TO GET OUT OF VAUXHALL.

She wanted the ideal location to help her creative writing. She - and her husband, her dog and her cat - also wanted a bit of countryside.

Her new book, 'No Pain, No Game', is a psychological thriller based in the UK is now available on Kindle and paperback from Amazon.

Lucie lives in a sixth-floor apartment in Hugero Point, near the Greenwich Yacht Club, so Thames views are an everyday enjoyment for her family.



If you see her walking her spaniel, she might even sign a copy of her book for you.

Lucie + family

"We moved here three years ago. And we love it. I started writing as soon as we moved in. My first book has just been published. I'm sure this peaceful environment, the staggering views and the profusion of local coffee shops all helped."

Do you have a story to share with the Greenwich Millennium Village community?

PLEASE GET IN TOUCH AT GMV@CPPLC.COM



*How the podium Garden at 67 Park Central will look once completed.**



*Construction work
is progressing to
plan with 67
Park Central.*

CONSTRUCTION UPDATE MOVING AHEAD ON 67 PARK CENTRAL

This phase of the project will comprise 135 apartments over 3 blocks, varying in height from 5 to 11-storeys and all centred around a central first floor landscaped podium with ground floor parking below.

If you would like to stay informed on construction progress on a monthly basis please email paul.marlow@mcaleer-rushe.co.uk



5%

REDUCTION
ON ENERGY
CONSUMPTION
AND WATER ON
2019 FIGURES



95%

OF ALL
CONSTRUCTION
WASTE IS
DIVERTED FROM
LANDFILL

As can be seen, much of the groundworks for 67 Park Central are now finished. Buildings are beginning to take shape and floor levels are rising up to third floor levels on some of the apartment blocks.

Looking ahead, we will be progressing with the concrete frame to the new Aspect and Apex blocks whilst laying the concrete slab for the Vantage block moving in over the next few months. Look out for more construction updates soon.

RECOMMEND A FRIEND

DO YOU CURRENTLY LIVE AT GREENWICH MILLENNIUM VILLAGE OR KNOW SOMEONE THAT WOULD LIKE TO? WHY NOT TELL YOUR FRIENDS, COLLEAGUES AND FAMILY MEMBERS? YOU COULD GO ON TO EARN YOURSELF A WHOPPING £1,000* IF THEY BUY A NEW HOME HERE.

We've already given away thousands of pounds to existing residents who have all recommended our new homes - you could be next to benefit! It's really simple. All you have to do is to ask your friend, colleague or family member to bring this magazine with them on the day they reserve. Your details are then recorded and provided they proceed to legal completion, you'll receive £1,000*

We currently have a superb selection of new homes available and a wide range of purchasing schemes, so right now is a great time to recommend a friend, colleague or family member!

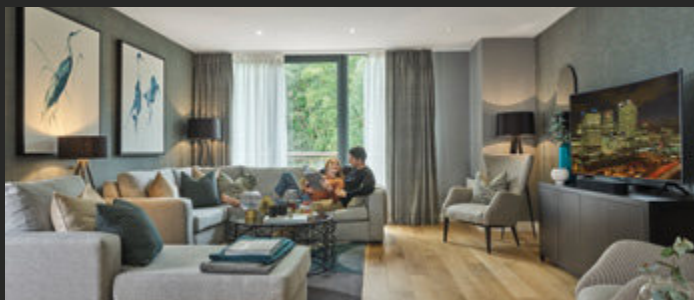
WHY BUY
NEW?

IT'S READY TO
MOVE IN TO

YOU DON'T
NEED TO WAIT
FOR YOUR
SELLER TO
MOVE OUT

LOTS OF
BRAND NEW
APPLIANCES
AS STANDARD

RESERVE A
HIGH QUALITY,
ENERGY-
EFFICIENT
HOME



1 BEDROOM APARTMENTS

- Exceptional internal specification as standard
- Open-plan kitchen/living/dining area
- Private outdoor space

GUIDE PRICES FROM £450,000



2 BEDROOM APARTMENTS

- Fantastic apartments with a range of layouts
- Some apartments benefit from views of adjacent park or podium garden
- Balcony or terrace to each home

PRICES FROM £577,495



3 BEDROOM APARTMENTS

- Apartments, maisonettes and duplexes available
- Impressive principal bedroom with en suite and fitted wardrobe
- Balcony or terrace to each home

PRICES FROM £614,995

*Subject to terms and conditions. Offer available only at time of reservation and payment will only be made upon legal completion. Only one referral can be claimed per reservation. Available on selected plots only. Offer may be withdrawn at any time without prior notice. Please contact a Sales Consultant for further details. Information correct at time of going to print. December 2020